

RANZCO museum

Sharing our heritage

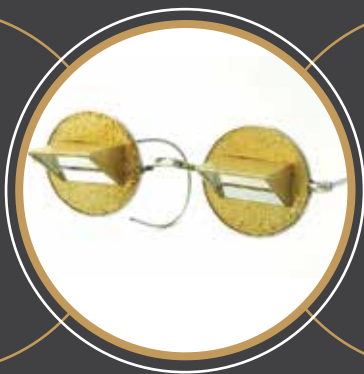
Before RANZCO Existed

As part of our legacy, a series of presentations at Congress will lead us from the early peripatetic surgeons after the colony was established to the formation of the Australian Society of Ophthalmologists. Experienced in eye and ENT procedures, the early ophthalmologists were trained in England and by the early 20th century, belonged to the British Medical Association. Later, when the Australian Society of Ophthalmologists was formed, the roots of academia became evident leading to the foundations of our college.

Recollections of the early days in the building at Commonwealth St, which was donated by the Medical Eye Service, operating with its meagre staff and the eventual move to Chalmers St will be shown. The next major event in our evolution was the amalgamation with our New Zealand colleagues thus forming RANZCO.

There has been an outpouring of interest in poster submissions for the Museum exhibit. A historical meeting in Melbourne will showcase these presentations for discussion in the weeks leading up to Congress. It is hoped that this will become a regular event to foster further interest in our heritage.

David Kaufman
Museum Curator



Prismatic spectacles

Have you ever struggled uncomfortably in bed to get a better view of the TV?

These prismatic spectacles from the 1930s allow one to lie flat for comfortable viewing!

These and many other unique spectacles from the collection form part of the Congress exhibit.



Graefe knife

If you needed a sharp knife, then the in-house instrument technician would oblige by sharpening and then testing your Graefe knife on a kidskin drum before use.

Knives with ivory and tortoise shell handles evolved with better metallurgy. Diamond blades and disposables will also be on display.



Historic slit lamps

From the original Gullstrand slit lamp used by Dame Ida Mann through to the early Haag Streit and Zeiss models, the history of the slit lamp from 1911 to 1970 will be on display.